

# THE LONDON WELSH SUPPORTER



Newsletter of the London Welsh Supporters Club, supporting London Welsh RFC, Welsh Sport, Culture and Activities

Issue 7

*Who is this ex London Welsh player visiting Old Deer Park. See page 12*



## 2008 Autumn Internationals

Saturday 8th November

**2.30pm Wales v South Africa**

London Welsh Rugby Club Choir

City Hall before and after game. £7

Saturday 22nd November

**5.15pm Wales v New Zealand**

St David's Hall before game only. £5

Saturday 29th November

**Wales v Australia**

with Côr Meibion Dyffryn Aman

City Hall before and after game. £7

These will NOT be open to the public.

Tickets can be obtained from:

**Mike Hynd 020 8948 1614**

email: [hyndmichael@yahoo.com](mailto:hyndmichael@yahoo.com)

**Pete Lowe 07815 914369**

Email: [petelowe79@yahoo.com](mailto:petelowe79@yahoo.com)

or from the Supporters Club Desk at any home game in the Pagoda Room at Old Deer Park.

## Coaches to Cardiff

The Supporters Club run away trips to Cardiff. Prices include entry to the Halls. Contact Brian Jones for coach details on

**07989 784082**

## New Era - New ground?



This season represents a new era for London Welsh as we join the ranks of the full time professional rugby clubs. Rumours abound about the club having to move from Old Deer Park to a larger, more spectator-friendly venue. What are the reasons for this and when is it likely to happen? The Supporters Club asked London Welsh Chief Executive Peter Thomas for enlightenment.

"Old Deer Park will always be the home of London Welsh. It is a club full of history played at a unique venue and London Welsh will still be playing rugby here for many years to come. However, restrictions imposed on us by Crown Estates mean that we cannot develop the ground any further for 1st XV matches. We have done as much as we can with what resources are at our disposal but still cannot comfortably cope with more than two thousand five hundred spectators and still provide a reasonable view and shelter for them and although we are not matching this figure at every home game, our ambition to play in the Premiership means that it is likely that a move of some sort must happen in the future.

"You must also have heard that the RFU has a new structure to include two Championship Divisions and this means that Old Deer Park is unlikely to meet the criteria imposed by them.

Toilet facilities, both female and



*Brentford's proposed new stadium at Kew Bridge.*

disabled, are totally inadequate and although this is the responsibility of the Old Deer Park Partnership, a great deal of money needs to be spent to bring the ground up to the RFU specifications.

It is therefore likely that some matches next season will be played at Brentford's ground which has already hosted rugby league matches with London Broncos.

We also need to build a relationship with Brentford to ensure that we can be part of their plan for their new stadium".

# Pre-Season at Old Deer Park

Whilst the pre-season move to professionalism was going on behind the scenes at London Welsh the backroom staff were also busy.

Professionalism does not only refer to the activities on the pitch, but a lot more work had to be done to make sure that the ground and facilities matched up to our ambitions.

Sponsorship needed to be sought for both the match programmes and pitchside boards, a new sound system was installed, the grandstand was repainted and renumbered, plus seats allocated, and the scoreboard refurbished. Rubbish was cleared, trees trimmed, grass cut and general maintenance on the ground was undertaken.

The main activity however was the rebranding of the Club's image and implementing this over all of the printed collateral that goes out to all members, newspapers, other First Division clubs, suppliers of the Club's signage and a new pitchside bar.

The players also requested that the rebranding was included in the dressing rooms and stairwells plus new display stands were designed.

The media interest in the club this season has been immense and we have been featured on Sky's Rugby Club and S4Cs Scrum 5 programmes on a number of occasions as well as many TV and press interviews given.

The inside of the Club will also be rebranded shortly with photographs of players in the bar areas.



*New and updated touchline hoardings are installed*



*The stand is repainted and seats numbered and allocated*



*Installing the new sound system*



*Putting up the posts*



*Peter Thomas being interviewed by S4C*



*The new pitchside bar is installed*



*Refurbished scoreboard*



*Player's changing rooms rebranded*

# Druids make a welcome return

## Druids Team Manager Gareth Streeter gives us the reasons

After a season in the wilderness the Druids are back, for the summer of change at Old Deer Park extended far beyond the first XV and having been cut off in its prime after just a handful of matches last season, London Welsh's traditional second team have been resurrected, complete with some familiar faces back at the helm.

Mark Walbyoff returns as coach with Gareth Streeter taking on the team manager duties, although as Streeter points out, the guise of 'team manager' can indeed cover a rather broad spectrum of responsibilities. *"It's really good news that the Druids have been re-instated, as it'll improve the profile in terms of linking the social club with the 1st Team,"* said Streeter.

*"The Druids have been re-instated in order to provide a high quality skill level within the club, but below the 1st Team. It will give an opportunity for game time to players returning from injury, players in the 1st Team squad who haven't had the opportunity to play a good level of rugby, Academy players and Development players"*

There are a host of local derbies ahead for the Druids to get their teeth into, as Richmond, London Scottish, Esher, Ealing, Wasps and



Rosslyn Park provide some of the opposition on an intriguing fixture list. Newbury, Plymouth, Blackheath and Glamorgan Wanderers making up the itinerary.

*"The real issue though is that we actually have a serious rugby club below the first Team - it will give a focus to the amateur side of the club, particularly an avenue for the development of U19's through to first team standard,"* said Streeter.

The Druids will be a regular sight on the 1st team pitch over the coming months, as they re-enter the Canterbury Shield with an esteemed reputation to uphold, having won the competition every season they've entered it, with just one solitary exception. It's a legacy that Streeter is aware of but not one that concerns him.



## Tough opener for the Druids as they take on champions Plymouth

London Welsh Druids took on reigning Canterbury Shield champions Plymouth in their opening league match of this season's campaign.

Preparation time had been limited for the team ahead of their clash with Plymouth and a number of simple mistakes were made in team organisation.

However, Welsh took enough positives from the game to suggest that the team is a vital part of the London Welsh club and its development. There were two excellent individual tries from Joe Ajuwa and a very good team try finished off by Gavin O'Meara, with three excellent strikes to convert from difficult positions from Joe Mattams.

The fitness and physicality displayed by all the players was good considering that Welsh's season had only just started, while Plymouth were playing their sixth match.

Plymouth played very well to score five tries but three of them came from simple Welsh mistakes. The Druids though will take heart from the fact that they can get better and this is a positive in what was a very well intentioned team performance.

**Final Score:** London Welsh Druids 21  
Plymouth 35

Since this game the Druids have had two more games, narrowly losing to Richmond away and beating a strong Ealing side at Old Deer Park.

## *Cranking up the hospitality*



*Pre-match lunches in the Pagoda Room prove to be very popular*

London Welsh receives many favourable comments from both home and visiting supporters about the level and standard of catering at home matches. This year the Club has endeavoured to provide even better hospitality with a covered pitchside marquee and bar to provide supporters with shelter during inclement weather plus a new bar area near the grandstand. The London Welsh Hog Roast continues to be a favourite and further food outlets will be appearing on the ground shortly.

The biggest successes however are the pre-match hospitality lunches served in the Pagoda Room before each home game. These are available by pre-booking either individually or in tables of 8, 10 or 12 by contacting Mike Davies on 07917 441789 or via the club on 020 8940 2368.



## The Shaftesbury Arms

121-123 Kew Road, Richmond  
Tel: 020 8255 2419

Come and sample our  
**New Thai Menu**

Monday - Friday  
12.00 - 2.30. 5.00 - 9.30  
Saturday - 12.00 - 9.30  
Sunday closed

**BIG SCREEN TV**

Proud to support  
**London Welsh Women's RFC**

## FORD BENTALL LLP

CHARTERED CERTIFIED ACCOUNTANTS

PRINCIPAL:

**Keith A. Ford, F.C.C.A., C.T.A.**

**Audit, Accounting and  
Taxation Services**

60 High Street, Chobham, Surrey  
GU24 8AA

Tel: 01276 856161

Fax: 01276 856286

Email: [keith@fordbentall.co.uk](mailto:keith@fordbentall.co.uk)

Association of Chartered Certified  
Accountants

## EXPRESS TAVERN

**56 KEW BRIDGE ROAD  
TW8 0EW**

**EXCELLENT REAL ALES  
FINE HOME COOKED FOOD**

*Gordon and Liz Rough  
are delighted to support  
London Welsh RFC*

Tel: 020 8560 8484

Email: [expresstavern@aol.com](mailto:expresstavern@aol.com)

**PLEASE SUPPORT OUR SPONSORS - THEY ARE SUPPORTING US**

# London Welsh Male Voice Choir in international mood

## USA tour with a police escort. Qatar next?

The London Welsh Male Voice Choir completed a successful tour of New York and Boston in September. The Choir had been invited to sing at Harrison High School, New York by ex London Welsh supporter Jeff Jones who moved to America with his wife Portia last year.

Harrison Recreational Services Manager Ron Belmont was delighted to help organise the concert and just to show what real American hospitality is like, he provided a police escort to guide the choir's three coaches from the New York freeway to a lakeside barbeque where the Mayor of Harrison, Joan Walsh welcomed the Choir and guests.

The concert featured three local soloists, as well as the Choir's own Geraint Lewis and was a great success, prompting an immediate request by the organisers for the Choir to return in the future.

The Choir then made their way from New York to Boston by Amtrak where they sang at the Regis College with



the Boston Saengerfest Choir who appeared at the London Welsh Festival of Male Choirs at the Royal Albert Hall on October 18th.

Social excursions to the Sam Adams Brewery in Boston, Whale Watching, a visit to Salem, home of the 17th Century Witch Trials, a meal at the Brewery at the Empire State Building plus an unscheduled appearance by the New York Fire Department to rescue one of the chorister's credit card down a grating, made the tour a very enjoyable one.

## Qatar

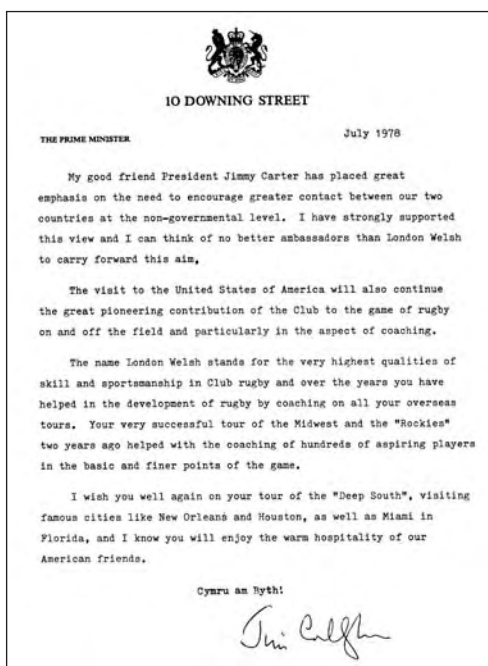
Plans are well advanced for the choir to sing at the opening of the Anglican Cathedral in Qatar, Middle East in January 2009.

## Service at the Cenotaph

On Tuesday 11th November at 11 O'Clock the London Welsh Male Voice Choir will take part in a live broadcast service from the Cenotaph in Whitehall as part of the 90th Anniversary of the end of WW1.

## Archive Corner 1

Putting together the above article on the London Welsh Male Voice Choir tour to the USA made me take a look in the club archives to get some information on the London Welsh Rugby Club's Tour to America in August 1978.



Amongst the programme notes, I discovered a letter from the then British Prime Minister Jim Callaghan and another from the American Ambassador to Britain, Kingman Brewster, both extolling the virtues of London Welsh.

**PLEASE SUPPORT OUR SPONSORS - THEY ARE SUPPORTING US**

## Player Profile - Greg Morton



**Team:** Wizards.

**Position:** Flanker.

**Place of Birth:** Gillingham, Kent.

**Educated at:**

Tiffin Boys School, Loughborough University (Freshers Rugby Union, 2 years rugby league - UAU Student Champions)

**Previous Clubs:**

Kingston, London Irish, Richmond.

**Best London Welsh Rugby Memory:**

A lot of blurred social ones: dinners, balls, discos, casinos and the odd spontaneous messy sesh, but from a playing perspective it would be the Wizards' win against a most frustrated Barking 1st XV and somehow managing to beat their winger to the ball after a length-of-the-field race in the closing minutes to deny them a try and my lungs without any oxygen for the next hour or so,...well that's how I remember it.

**Worst London Welsh moment:**

Watching England lose to Wales in the 2005 6 Nations, where every member of the extended Occies tribe seemed to file past me after the final whistle to commiserate, each offering a delightfully patronising ruffle of my hair

**Favourite Food:**

Wild Boar. Closely followed by a plateful of steak and black pudding. Any kind of meat really.

London Welsh Wizards train every Wednesday night at Old Deer Park. Commencing 7.30. Contact [ianhorganrugby@yahoo.co.uk](mailto:ianhorganrugby@yahoo.co.uk)

## Wizards change to meet new challenge



*Lining up a kick for the Wizards.*

It has been a time of change for the Wizards at the start of this season, with a return to our old, but closer competition, the Surrey Premiership, after spending more time travelling last season than actually playing! A few old faces hanging up their boots whilst also seeing quite an influx of new players to the squad, and also two players moving up to the Druids!

Greg Morton has taken over the reigns as Captain this season and is settling into the role however the team initially struggled to gel together and we lost our first 3 opening games. Stag weekends in 'season' didn't help nor several expectant fathers waiting for the happy day to arrive in the pack, all hindered us, but after one embarrassing afternoon, we had to change a few things around.

Main message, forget the ELV's and in the words of Shaun Edwards 'smash them' in defence. As a result we have won our last two games and hope we can continue in the same vein over the coming months and then gain our revenge in the return fixtures.

The squad is looking healthy, however if there is anyone looking for a good level of rugby but is unable to commit to twice a week training and is part of the front row union, then please get in touch as hopefully in the near future there will be sufficient good players from ourselves, the Occies and the Druids to field another competitive side.

**Ian Horgan**  
London Welsh Wizards

## Player Profile - Leah Morley



**Name:** Leah Morley

**Place of birth:** Sydney, Australia

**Position(s):** Back Row - mainly blindside flanker

**Years at London Welsh:** 3

**Welsh Connection:** London Welsh

**Best Rugby Moment:**

Winning Best Newcomer 2005/6

**Worst moment at London Welsh:**

Not sure I have one yet.... although I hate being sidelined due to injury.

**Favourite Singer:** Madonna

**Favourite Dance:** Hobby-horse (when I score)

**Favourite Food:**

Kangaroo burgers (medium rare)

**PLEASE SUPPORT OUR SPONSORS - THEY ARE SUPPORTING US**

# London Welsh Women produce top players



*Pictured above (l-r): LWWRFC players Caroline Wolfendale (Inset), Miriam Evans (Wales Touch Rugby); Linda Merrit, Jane Crowther, Kim Horstmanshof*

London Welsh Women's Team, are continuing to produce high calibre players. Miriam Evans was selected not only to represent Wales in Touch Rugby, but was also asked to be the Nation's flag bearer at the opening ceremony.

In addition, four of the team have been selected to represent Middlesex at County level after trials were held a few weeks ago. Kim Horstmanshof, Linda Merritt, Jane Crowther and Caroline Wolfendale are all part of the Middlesex squad and Caroline has, for the second season running, been appointed as Captain of the side. The games are already under way, with the side travelling to Hove to play two matches. Middlesex made it two wins in a row beating Sussex 39 - 0 and Hertfordshire 24 - 0.

LWWRFC are very proud of the players and wish them every success in their forthcoming matches.

## International Training

LWWRFC were extremely pleased to welcome England International and Saracens player Maggie Alphonsi to the club on Wednesday 10th September.

Maggie came down to run a specialist training session for back row players in the squad. The session was enjoyable and extremely constructive: centred on the job of the tackler, the focus was on correct technique and body positioning.

This season the new ELV rulings will affect the flow of the game at break down situations, the session aimed to

highlight the importance of ball awareness once a tackle has been made.

Thanks go to Maggie for a great session!

## League Matches

Welsh have had a tough start to the season so far. A strongly contested game against Wasps was a bruising way to start the season. Despite taking the lead in the first half, Welsh allowed two tries to slip past them before half time. Although they came back in the second half, a try by the opposition in dying minutes of the game meant that the honours were held by Wasps. The game ended 15-12.

October 5 saw our first home game of the season. It was played against the newly promoted Thurrock. From the outset Welsh were on the defensive, as Thurrock were the first to attack. They ran hard and fast, and took advantage of the quick ball they were getting. Welsh defended hard, but the first 2 scores went to the visitors: 0 - 10.

A brief period of possession saw Welsh with a penalty awarded under the posts, and Welsh were off the mark. As the whistle went for half time, the score line reflected the amount of territory and possession Thurrock had had, reading 3 - 20 in favour of the visitors. Sadly the second half showed Thurrock proving their mettle and despite some excellent tackling and defence at the fringes of the breakdown Thurrock achieved a considerable score, much of it in the dying minutes of the match. At the final whistle, Welsh were able to leave the

pitch with heads held high, having given their all whilst showing themselves to be a highly disciplined team. The final score was 3-73.

On October 12th London Welsh travelled to Chesham, still searching for their first league victory of the season. The conditions were perfect for a free-flowing, fast game of rugby. Welsh kicked-off and chased the ball down well, putting early pressure on Chesham. However, injuries in the opening minutes meant an early rearrangement of both forwards and backs. Welsh made some good attacking runs, choosing to keep the ball in hand rather than squander possession by kicking, but the try line remained elusive and the half time score was 0-0.

Receiving the ball at the start of the second half, London Welsh attacked with renewed vigour, and continued to press the home team. Then a solid scrum gave our scrum half the opportunity to make one of her darting runs through Chesham's defence, touch the ball down under the posts and give London Welsh the lead 0-5.

Welsh continued to press forward, but towards the end of the game, a good scrum from Chesham in the Welsh half gave them the platform to launch an attack. A penalty increased the pressure, and the Chesham backs were able to run in an unconverted try just 8 minutes from the final whistle. The reds threw everything they had at the opposition in the closing minutes, but were unable to score again, so had to be content to come away with a draw.

There have been many positives to take from our games so far. Defensively we have been very strong and our lineouts are excellent. We shall keep working on our attacking penetration and the first league win is not too far off. Our next game is at home on the October 26 against Aylesford Bulls and all support is welcome.

**London Welsh Women train every Monday and Wednesday night at Old Deer Park. Commencing 7.30. Contact [ruthiebarton@hotmail.com](mailto:ruthiebarton@hotmail.com)**

**PLEASE SUPPORT OUR SPONSORS - THEY ARE SUPPORTING US**

## London Welsh CASC

To ensure the security of the London Welsh amateur sections it was decided that they should be set up as a separate entity, being financially self sufficient and have its own governing body. Application was made and CASC (Community Amateur Sports Club) status was granted to the club in 2004.

Sports clubs play a valuable role in their communities. The CASC scheme recognises this important role by distinguishing between clubs and businesses for rates and tax purposes, ensuring money is kept in sports clubs. The key benefits are:

- 80% mandatory rate relief
- Gift Aid on donations
- Exemption from some levels of Corporation Tax

The objectives are to establish, maintain and conduct amateur rugby teams and to operate rugby facilities for the community;

In order to achieve this we also encourage the development of volunteer coaches, referees and admin roles.

## London Welsh CASC

*The CASC are looking for new sponsors to help continue with the running of the amateur side of the club.*

*Contact the club for details  
020 8940 2368*

## Gwalia Male Choir

The list of engagements are also held on our website:-

[www.gwaliafemalevoicechoir.org.uk](http://www.gwaliafemalevoicechoir.org.uk)

### November, 2008

- Saturday, 29th - 7.00 p.m.
- 90th Birthday party at Old People's Home, Sidcup

### December, 2008

- Saturday, 13th - 7.30 p.m.
- St. John the Evangelist Church, Crystal Palace

*Interested in joining? Contact David Hurlbut - 07763 768 499*

### February, 2009

Saturday, 7th  
Wedding at RAF Church, St. Clement Danes, Strand WC2.

### May, 2009

Saturday, 2nd to Monday, 4th  
Weekend trip to Antwerp.  
Saturday, 16th - 7.30 p.m.  
St. Mary's Church, Barnes.

### July, 2009

Saturday, 11th - 4 p.m.  
Wedding. Kensworth,  
Near Hemel Hempstead, Herts.

## Archive Corner 2

2010 is the 125th Anniversary of London Welsh. In our Centenary Year of 1985 one of the highlights was a game against a star studded Barbarian side played at Twickenham.

The BaBas went on to win narrowly 27-24.

Scorers were:

**London Welsh:** Tries: Colyn Price, Tim Jones, Guy Leuleu, Jeremy Hughes, Gareth Davies. Cons: Price 2.

**Barbarians:** Tries: Rory Underwood (2), Philip Matthews, Simon Smith, John Jeffrey. Cons: Peter Dods 2. Pen: Michael Keirnan. Half Time 11-4.

The Times Newspaper singled out Welsh scrum half Mark Douglas for particular praise.



## Supporter Profile

*Here we feature some regular London Welsh supporters.*



*You'll find this cheerful trio at most home games. Left to right, Erica, Maria and Miriam from the London Welsh Womens team.*

## Sound bytes

After losing heavily to Leeds recently it's nice to know that we do win sometimes! Here are some quotes from the Leeds Carnegie message board

*"As we left, the only downside was that if we do succeed in gaining promotion it'll be at least two years before we can come back to the Welsh. It's a great place, a great club, and a great place to spend a Saturday."*

*"We could learn so much from the London Welsh club. Everything was geared to the supporters, outdoor seating areas, barbeques, beer tents, easy access to any part of the clubhouse, easy access to the players post match, spectators walkways and boards to stand on, and a constant stream of planes flying overhead, not forgetting of course Welsh Cakes, Brains beer and a Pagoda, ah Bliss."*

**PLEASE SUPPORT OUR SPONSORS - THEY ARE SUPPORTING US**

# Occies League Campaign gets under way

**Danny Griffiths reports**

The London Welsh Occies are a long standing tradition of London Welsh Rugby Club, retaining that unique atmosphere that makes rugby special and also bringing the flavour of Welsh rugby to a corner of Richmond, not just for homesick Welshmen but to anyone who enjoys social rugby.

The Occies have started their Middlesex Merit Campaign well with three wins out of three owing to the fact they have managed to recruit some exceptional young talent that is gifted but too cool to train, which, added to our old Stalwarts is making for a team that I honestly believe is going to create a vintage year for the Occies.



London Welsh Occies contest a lineout against Rosslyn Park in the league

## 1st XV Player Profile



### Richard Martin-Redman

**Nickname:**

Omar.

**Position:**

Back Row.

**Place of Birth:**

Portsmouth.

**School:**

Portsmouth Grammar School.

**Best London Welsh Rugby Memory:**

Being made 1st XV Captain in my first season.

**Worse London Welsh Rugby Memory:**

Losing to Launceston last season.

**Favourite Food:**

Steak Pie

**Favourite Drink:** Lager

**Favourite Film:**

Usual Suspects with Kevin Spacey

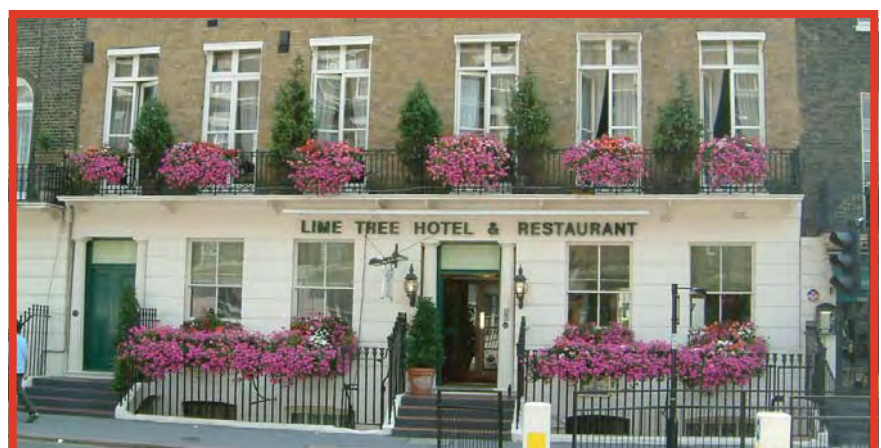
So far the three scalps we have claimed in the league are Rosslyn Park, London New Zealand and London Scottish, three of the traditionally strongest teams in our league, leaving us the only unbeaten side. If we can also see off WASPS I am hoping we can match not only topping the league as we did last year but also come back with the trophy for the play off finals.

The Vets are waiting to start their

league campaign in earnest and are always looking for older blood that still fancies a very physical but slightly slower game. We are hoping to continue the success of the pre-season friendlies into the league proper and are slowly piecing together a Vets side worthy of wearing the London Welsh badge.

Inerested? visit

[www.londonwelshoccies.com](http://www.londonwelshoccies.com)



*5 minutes walk to Victoria Station and close to Buckingham Palace*

- Family B&B     ■ All rooms with private facilities
- Colour TV/Telephone/Hairdresser     ■ Tea & Coffee



**LimeTree  
Hotel**

135/137 Ebury Street,  
London SW1W 9RA  
Tel: 020 7730 8191 Fax: 020 7730 7865  
Email: [info@limetreehotel.co.uk](mailto:info@limetreehotel.co.uk)

**PLEASE SUPPORT OUR SPONSORS - THEY ARE SUPPORTING US**

## London Welsh Minis and Youth



*1st XV squad members Mike Tagicakibau, Tomas Marks and Paul Mackey assist with the Mini's training at Old Deer Park in September.*

The Minis and Youth both started their seasons on 7 September. The Youth again are in various leagues of Herts/Middlesex whilst the Minis have various local fixtures as well as a number of festivals including their own on on **Sunday 9 November**, so why not come down and spot a dragon of the future.

With the 1st XV going professional, certain of the players are committed to community work to get the London Welsh name out into the locality. This includes training for 10 primary and 2 secondary schools in the local area as well as providing masterclasses to the rest of the club during the season and details are being formulated now. This is seen as a way of cementing the ties between the various sides of the club and passing on a valuable resource. We are hoping that as the profile of the club as a professional outfit becomes higher both locally in the Richmond area and in London and that this will attract more young players which is the key to a thriving youth section.

The club is spreading its word through touring including last season's u14s trip to South Wales and a game against Carmarthen Quins.

The u15s also went on a great tour to Ireland. Finally both the youth and minis are always looking for help of

any sort whether it be former players giving help on coaching or others who just want to volunteer in one way or another.

If you wish to help please contact me through the minis website [www.londonwelshminis.org](http://www.londonwelshminis.org)

Here's all hoping for a happy season for all teams who wear the red shirt with pride.

**Mike Talbot**  
*Chairman, London Welsh Minis*



*Players and coaches of London Welsh U14s during their fixture against Carmarthen Quins*

## Support the Minis at half time!

You will notice at half time at 1st XV games the minis playing local teams. Please give them your support.

On 1st November in the match versus Rotherham they played London Irish. The minis will also be selling raffle tickets for the festival with some great prizes so please be generous and if you are approached by an 8 year old in London Welsh kit asking you to buy a raffle ticket **please do so.**

The minis are all part of the "London Welsh" family and they hope to see you on the 9th of November.

## LONDON WELSH MINIS FESTIVAL NOVEMBER 9 OLD DEER PARK

Starting at 11am with  
a 2 minutes silence for  
Remembrance Day.

Teams from Richmond, Wimbledon,  
Blackheath and Salisbury  
with the kids playing  
from u7 to u12

*Come and spot some stars of the  
future.*

**PLEASE SUPPORT OUR SPONSORS - THEY ARE SUPPORTING US**

## Obituaries

It is with sadness that we mark the passing of the following London Welsh Supporters.

**Marion Richards**

**Kelvin Smith**

**Jim Edgar**

**Gwyn Charles**



A welcome visitor to London Welsh this season has been Wasps and England fly half Danny Cipriani.

He is pictured here with two of the London Welsh ballboys Angus Munns and Chris Stanton.

## Staff Profile

Here we feature some new staff working at Old Deer Park



Name: Anya Nemkina

Place of Birth: Latvia

Welsh Connection: None but learning a few Welsh phrases!

Favourite Player: Aled Thomas

Best thing about working at London Welsh: Meeting all the Welsh people and the rugby boys!

## London Welsh Rugby Club Choir raise £5,500 for Leukaemia Research

The London Welsh Rugby Club Choir sang at a concert organised by Bedford Rugby Club in memory of the choir's concert secretary, Keith Roberts who sadly died of Leukaemia last August.

Keith was a founder member of the Choir and was also heavily involved with Bedford and East Midlands Rugby. A cheque for £5,500 was presented to the Leukaemia Research Fund by his widow Mary before Bedford's recent game against Manchester.

### Choir back for the Pirates

The Choir performed at the opening fixture at Old Deer Park on Sunday September 7th when both London Welsh and Doncaster Supporters were given a taste of the choir's repertoire.

A packed Pagoda Room heard the choir performing some of the well known Welsh rugby songs before finishing off with a rousing rendition of the Welsh National Anthem. The Choir will be back at Old Deer Park for the game against Cornish Pirates on December 6th.



### Sweden wedding for Choir

The Rugby Club Choir was invited in August to sing at the wedding of the daughter of ex-chorister Hugh Harkett.

The wedding took place in the beautiful castle of Sodurtuna Slott in Gnesta, Sweden. The choir were flown out from Stansted and sang during an open air service on the lawns of the castle, before entertaining guests throughout the day and evening. An impromptu stop at the seaside town of Nykoping on the way back to the airport prompted more singing for the appreciative locals.

### Brecon Cathedral

On October 4th, the London Welsh Rugby Club Choir joined forces with their colleagues of Talgarth Male Choir for a joint concert in a packed Brecon Cathedral on behalf of Usk House Hospice and Cathedral Funds.

The London Welsh Rugby Club Choir before singing at the wedding in Sodurtuna Slott in Gnesta, Sweden

### Poole Concert

The Choir also sang in July at the Church of the Transfiguration in Sandbanks, Poole, organised by London Welsh supporters Deborah Dennyson and Keith Thomas.

## LONDON WELSH RUGBY CLUB CHOIR

All Saints Church  
Leavesden, Watford

15th November 2008

7.30pm

Tickets £10

available from 01923 661862

(9.00-9.45 only)

allsaintsleavesden@btconnect.com

**PLEASE SUPPORT OUR SPONSORS - THEY ARE SUPPORTING US**

## ***London Welsh Colts confident after last season***

The London Welsh Colts enter the new season with confidence and aims of glory.

Last season the Colts, made up of players between the ages of 17-19, just missed reaching the final of the English Colts Cup after falling to Bedford Blues in the semi final. The Colt's ambitions are very much focused on bettering that record this season.

The Colts will also be looking to improve on last season's placing in the Dragons Region Premier Division of the Welsh Youth League to challenge for the title. They will be hoping to overcome rivals Pontypool United, Newport High School Old Boys, Abertillery/Blaneau Gwent, Penallta and Blackwood.

The team's management are confident that these targets can be met with the talent in this season's side, the coaching team of Rob Samuels and Dave Mobbs-Smith agree.

The Colts train on Thursday evenings at Old Deer Park. For further details contact Team Manager, Chris Bracey on 07753193007.

**Charlie Evans**  
London Welsh Colts



*London Welsh Colts win the lineout against a strong Belgium National side who they narrowly lost to 24-25*

### ***London Welsh Academy***

During the half term break, three of the London Welsh Academy players trained with the 1st Team Squad.

Sam Katz from Merchant Taylors School, Robbie Martey from Mill Hill School and Eitan Humphries who is on work experience at St Paul's School were able to further their rugby education under the guidance of London Welsh Academy Coach Alan Rise.

---

## ***Robert Ackerman brings his New Zealand School to ODP***



Ex Wales, British Lions and London Welsh player Rob Ackerman recently returned to Old Deer Park as a master of Christ's College, Christchurch, New Zealand. His school team were touring Great Britain and had games against Christ's College Brecon and Wellington College in Hampshire. They were delighted to visit London Welsh and be offered training facilities before the game against Wellington.

*The Christ's College team from New Zealand seen in the stand at Old Deer Park with Robert Ackerman.*

*Right we see London Welsh Rugby Manager Gerald Davies talking to Rob before the training session.*

*Rob Ackerman played in the 1985 John Player Cup Final when London Welsh lost 24-15 to Bath at Twickenham.*



***PLEASE SUPPORT OUR SPONSORS - THEY ARE SUPPORTING US***

## Skills Coach Danny Wilson

One of the more significant arrivals at London Welsh this season has not been a player but Skills Coach Danny Wilson who came from Cardiff Blues and the Welsh 7s set-up. Here are a few questions we put to him.

**You had a great job with the Blues and the WRU, what made you decide on the move to Old Deer Park.**

I had been a skills coach with the WRU and Cardiff Blues for three years and although I had learnt and developed a great deal in this time I felt I needed a new challenge. When I first spoke to London Welsh I was extremely impressed by the ambition of the club and the fact that the club was going full-time professional for the first time in its history. The challenge motivated me and I believe that I have something to offer the club and the opportunity will provide me with the next step in my professional development as a coach.

**Do you think that the facilities at Old Deer Park will sustain professional rugby?**

Old Deer Park represents the fantastic achievements and history of London Welsh RFC; however the professional game of rugby union is moving at such a pace that if you don't keep up you'll get left behind. The long-term vision and ambition of the club is to achieve promotion to the Guinness Premiership and if that goal is to ever be achieved the club



must play at a venue that meets the strict RFU criteria. It is therefore vital that the club plans for the future and is prepared to meet the requirements of its highly ambitious objective.

**Does the history of London Welsh hinder or help the way forward.**

London Welsh has a proud history, the club has produced many Welsh Internationals and British Lions and this fact should never be forgotten, however it is vital that the club looks to create a new history and aims to produce internationals of the future. This is the first season London Welsh has gone full-time and therefore presents an exciting opportunity for the club to become a leading name in the professional world of rugby union. I joined London Welsh not to be satisfied with what the club had

*Danny giving a coaching clinic at Cardiff to the regional coaches of the WRU.*

achieved in the past and believe it my responsibility to help achieve success for the future.

**What is your vision for London Welsh**

When I first spoke to London Welsh I was sold on the ambition and desire of the club, it was made clear that the club wasn't going professional to survive in Division One but to challenge for promotion to the Guinness Premiership. As an ambitious coach this excited and motivated me and was something I wanted to be part of. Although this is an extremely ambitious long term goal with the right support, work rate and sacrifice it's a goal I believe is realistic and am currently working toward. In the past London Welsh has played and beaten some of the biggest names in English rugby, may those days return to the club and its passionate supporters.



### *The Ridgemount Hotel*

65-67 Gower Street,  
London WC1E 6HJ

**Tel: 020 7636 1141**

**Guests: 020 7580 7060**

**Fax: 020 7636 2558**

*info@ridgemounthotel.co.uk*

*www.ridgemounthotel.co.uk*

The Ridgemount Hotel is conveniently situated in the Bloomsbury area of central London. Family run for the last 36 years, the hotel is part of a Georgian Terrace, still owned by the Duke of Bedford. It is an excellent location for business or for pleasure.

The hotel has 32 clean and comfortable rooms, 15 of which are now en-suite. All rooms are centrally heated with colour televisions, hair dryers are provided and hot and cold drinks are available 24 hours in the lounge.

The Ridgemount prides itself on the number of guests who return year after year.

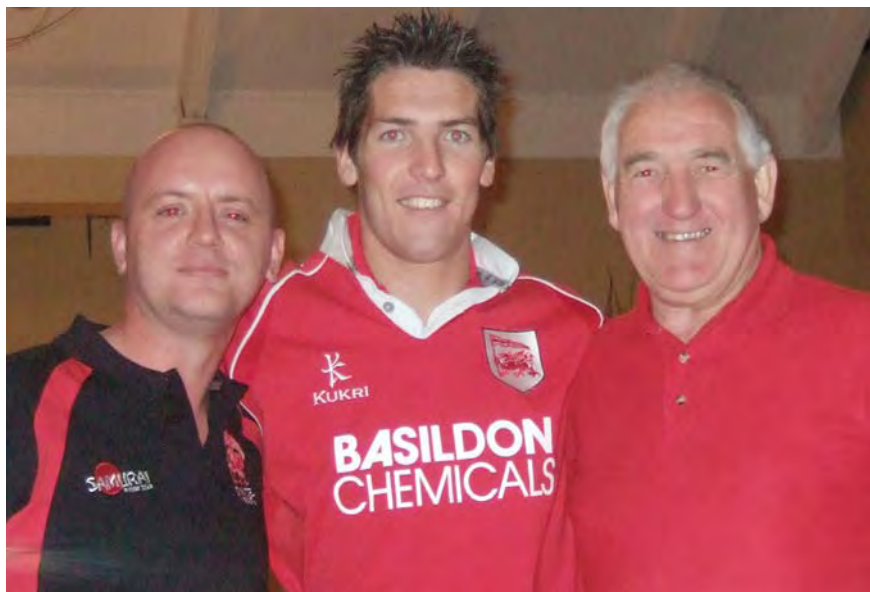


*Danny, with two of the Welsh 7s players at the Edinburgh tournament in which Wales lost in the semi's. Ex London Welsh player Richie Pugh and Daf Hewitt, now with Cardiff Blues.*

**PLEASE SUPPORT OUR SPONSORS - THEY ARE SUPPORTING US**

## London Welsh Wannabees?

Over the Summer months, London Welsh members have been encouraging various well known sporting personalities to don the famous red jersey. Here are some of their efforts...



London Welsh supporter Richard Lyons and a friend persuade a smiling James Hook to wear the jersey before the second Welsh Test in South Africa in June



Pete Lowe of the Supporters Club persuaded ex All Black lock Chris Jack now playing for Saracens to don the shirt as well as the three below!



Kevin Pieterse swaps his England shirt for a London Welsh one.....



Warren Gatland, later to become the guest speaker at London Welsh's dinner, tries the shirt for size.....



.... while his fellow Welsh Coach Shaun Edwards is happy to pose with his jersey.



... as does Andrew Strauss...

## London Welsh around the World



We also asked members to send in a photograph of themselves wearing a London Welsh jersey from some unusual locations. Here we see Dave Parfitt and his wife Maria outside the 'Bird's Nest' Stadium in Beijing, China before the start of the Summer Olympics.



... and Marcus Trescothick

## 6 Nations Fun Day at London Welsh

London Welsh fly half Tomas Marks organised a Six Nations Fun Day at Old Deer Park involving four schools in the area, Barnes School, Lowther School plus St Mary's Magdalene and St Osmonds from Mortlake.

Tomas, who's Community Rugby Coach with the RFU and looks after the Schools in Richmond and Hounslow enlisted the help of London Welsh squad members Jonathan Mills, Paul Mackey, Tom Rock, Alec Jenkins together with Club Captain Richard Martin-Redman and Academy Coach Alun Rise to help him run the Festival and they seemed to be enjoying the day as much as the children.

The children were given various rugby-oriented tasks to do and were representing countries from the Six Nations playing members.



Tomas Marks giving directions to one of the schools involved in the Fun Day.



Richard Martin-Redman oversees one of the tasks.



One of the schools celebrate finishing a task.



Alec Jenkins and Paul Mackey helping out with a dragon lurking behind them.

## London Welsh 400 Club

At the beginning of 1973, London Welsh RFC was thriving and it's playing achievements and membership numbers were at a high. It was then that the 400 club was formed to give support to team tours.

Players at all levels have gained so much from the camaraderie on team tours which have promoted the good name of London Welsh and created great friendships far and wide.

The 400 club exists to raise funds, but also involves all parts of the Club in "a bit of fun", namely the Prize Draw. At one home game each month all 400 club members are entered into a draw to win one of four prizes from £10 to £100, with a bonus Christmas prize of £500.

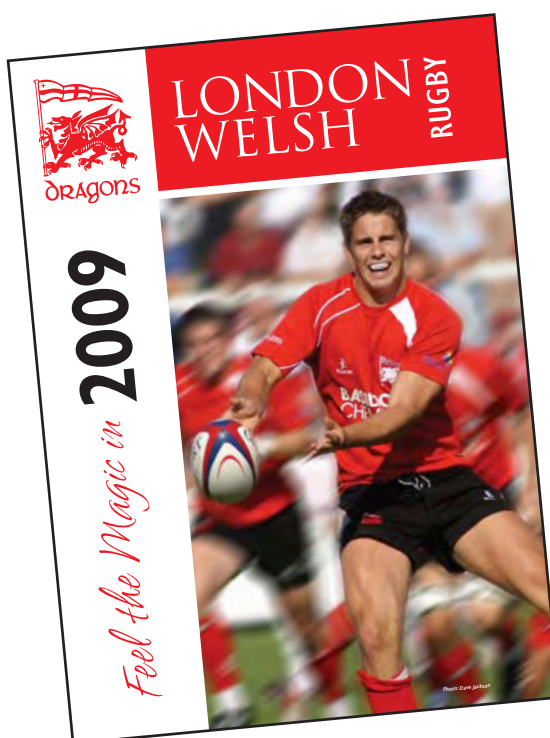
Winners' names are posted on the notice board for you to see, even if you miss a Saturday.

Be a part of the fun and excitement whilst helping to fund tours for the amateur sections all for a mere £13 a year! Contact Maria Thompson on 07941 418412 or email [mazza1canobi@yahoo.co.uk](mailto:mazza1canobi@yahoo.co.uk)

## 2009 Club Calendar

Support the London Welsh Family and buy a 2009 calendar.

The calendar features pictures from various teams at London Welsh and is a great Christmas present, keeping the name of London Welsh in view for a whole year! Coming soon to the club shop. See our website for full details.



**PLEASE SUPPORT OUR SPONSORS - THEY ARE SUPPORTING US**

# London Welsh Supporters Club

LWSC continue to support London Welsh in many ways.

Every penny we raise goes towards supporting London Welsh Rugby Club, from the Firsts down to the Minis. We also enable live music to be enjoyed after home games at Old Deer Park and we sponsor Supporters' coaches for every First XV away game.

Contact Brian Jones on 07989 784082.

Hospitality and entertainment during every one of Wales' home internationals in Cardiff is also arranged by the Supporter's Club.



**Lapel Badge £2.00**  
Old design badges are still available at £1 each

**Polo Shirts £12.00**  
**Waterproof Jackets £20.00**  
**Song Books £2.00 by donation**

**Visit the Supporters Club table in the Pagoda Room at every home game.**

We are always looking for new members to help out at the Supporter's Club functions. Please contact us if you can help.

## London Welsh Supporters Club Christmas Cards

**Support the Club with seasonal views of Old Deer Park in the snow. Available in November. See our desk in the Pagoda Room.**



## Archive Corner 3

Next year will be the 40th Anniversary of Prince Charles opening the clubhouse at Old Deer Park. Here we see him during the ceremony on October 22nd 1969.



Prince Charles has the crowd in cheerful mood at the Clubhouse opening ceremony  
Photograph: Richard Jones

*Chairman: Mike Hynd*  
Tel: 0208 948 1614  
Mobile: 07940073115  
hyndmichael@yahoo.com

*Vice-Chairman: Keith Ford*  
Tel: 01932 402294  
keith@kewford.co.uk

*Membership: Brian Jones*  
Mobile: 07989 784082  
brian@univent.co.uk

*Secretary: Martin John*  
Tel: 07711037261  
mjoh589@aol.com

*Treasurer: Pete Lowe*  
Tel: 07815 914369  
petelowe79@yahoo.com

*Publicity: Martyn (Joe) Jones*  
Tel: 07958 953445  
jones-rm@hotmail.com

### Other Committee Members

*Mike Davies* 07984103463  
mike.davies@london-welsh.co.uk

*Nigel Doe* 07967205364  
nigel@trakka.co.uk

*Alan Hanford* 0707918  
alanhanford@btinternet.com

*Toria Jamieson* 07816 586120  
dottigirl@hotmail.com

*Robert Mills* 07958 535130

*Rhianon Williams* 07971 423037  
rhianonwilliams@btinternet.com

It only costs £10 a season to be a member of the Supporter's Club although more generous contributions are most welcome.

Pick up a form in the Pagoda Room or ring one of the committee above.

## SHIP TAVERN

*Serving quaffable ales and fine fayre since 1549*

**12 Gate Street  
Holborn  
London, WC2A 3HP  
Award winning ales**

*John and Ross Evans  
are delighted to support  
London Welsh RFC*

**Tel: 020 7405 1992**  
**theshiptavern@hotmail.co.uk**